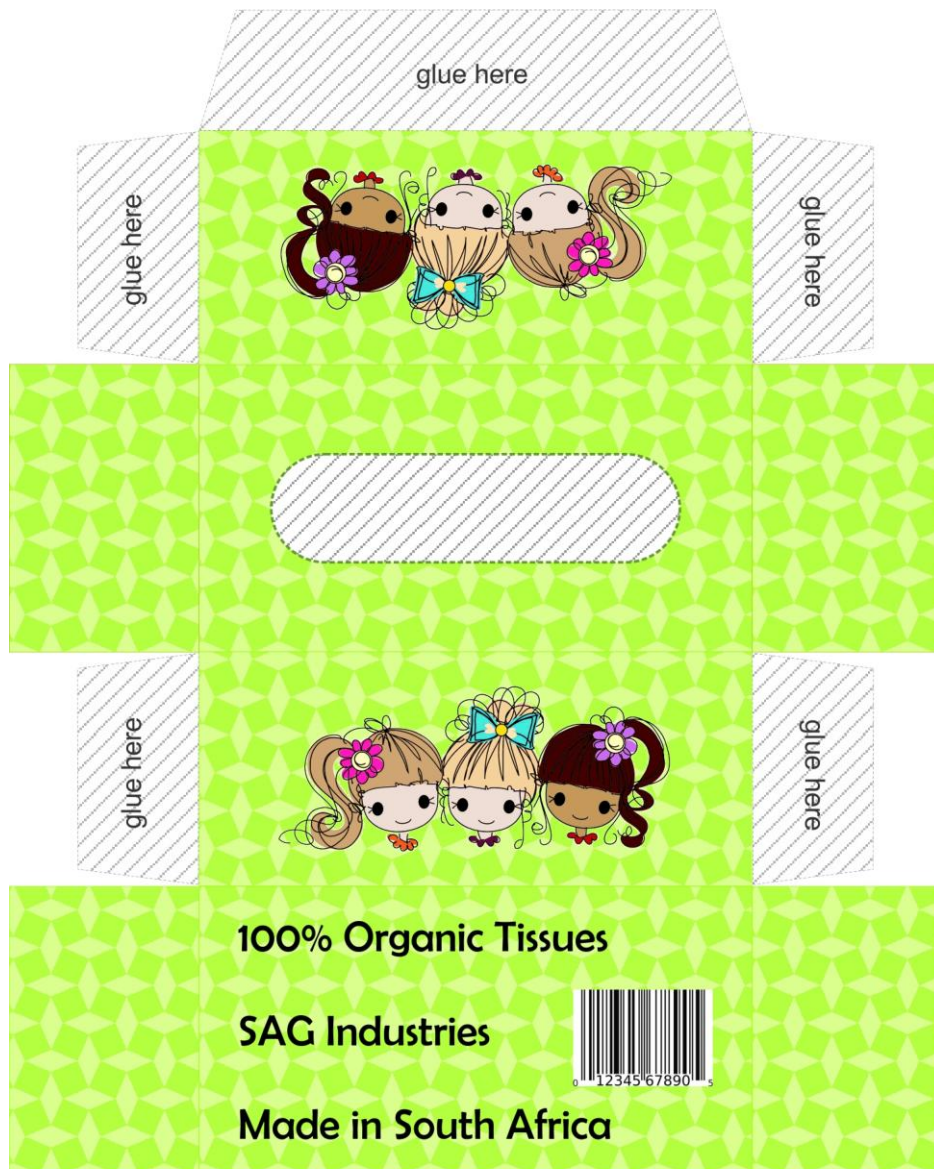




18" Doll Tissue Box

- \* print onto cardboard
- \* cut box out all around the outside
- \* cut open the opening in the top of the box
- \* Fold along all the lines
- \* add glue to the grey shaded areas
- \* the grey shaded areas are stuck in underneath the tissue box
- \* fill with tissues cut 6cm x 6cm
- \* More projects from [www.dollplaysa.com](http://www.dollplaysa.com)





### 18" Doll Tissue Box

- \* print onto cardboard
- \* cut box out all around the outside
- \* cut open the opening in the top of the box
- \* Fold along all the lines
- \* add glue to the grey shaded areas
- \* the grey shaded areas are stuck in underneath the tissue box
- \* fill with tissues cut 6cm x 6cm
- \* More projects from [www.dollplaysa.com](http://www.dollplaysa.com)

